

# High Risk species



WAP 1.2.1

<b>NSW Invasive Species Plan. Goal 1: Exclude</b>	
<b>Prevent the establishment of new invasive species</b>	<b>1.2 Lists of high risk species</b>

<b>Regional Weed Strategy. Aim: Preventative Weed Management</b>	
<b>No new weeds naturalised over the life of the RWS</b>	<b>Priority weed lists in each RWS</b>

Due to many species lists existing in several documents, it was determined that a collated high risk species list would be beneficial to the region as a quick reference.

<b>High risk species</b>	All Class 1 & 2 weeds and Category A & B weeds in a CMA subregion
--------------------------	---

Weeds of concern were identified by stakeholders during our Regional Weed Strategy (RWS) consultations (held 2003 - 2008) in each catchment. The complete list of weeds identified (including noxious weeds, environmental weeds, WoNS and alert list weeds) is located in the appendix of each RWS. In order to use available resources most effectively, weeds were then ranked using the prioritisation process (also in the appendix of each RWS). This process recognises that the most cost effective way to manage weeds is to target them in the following priority:

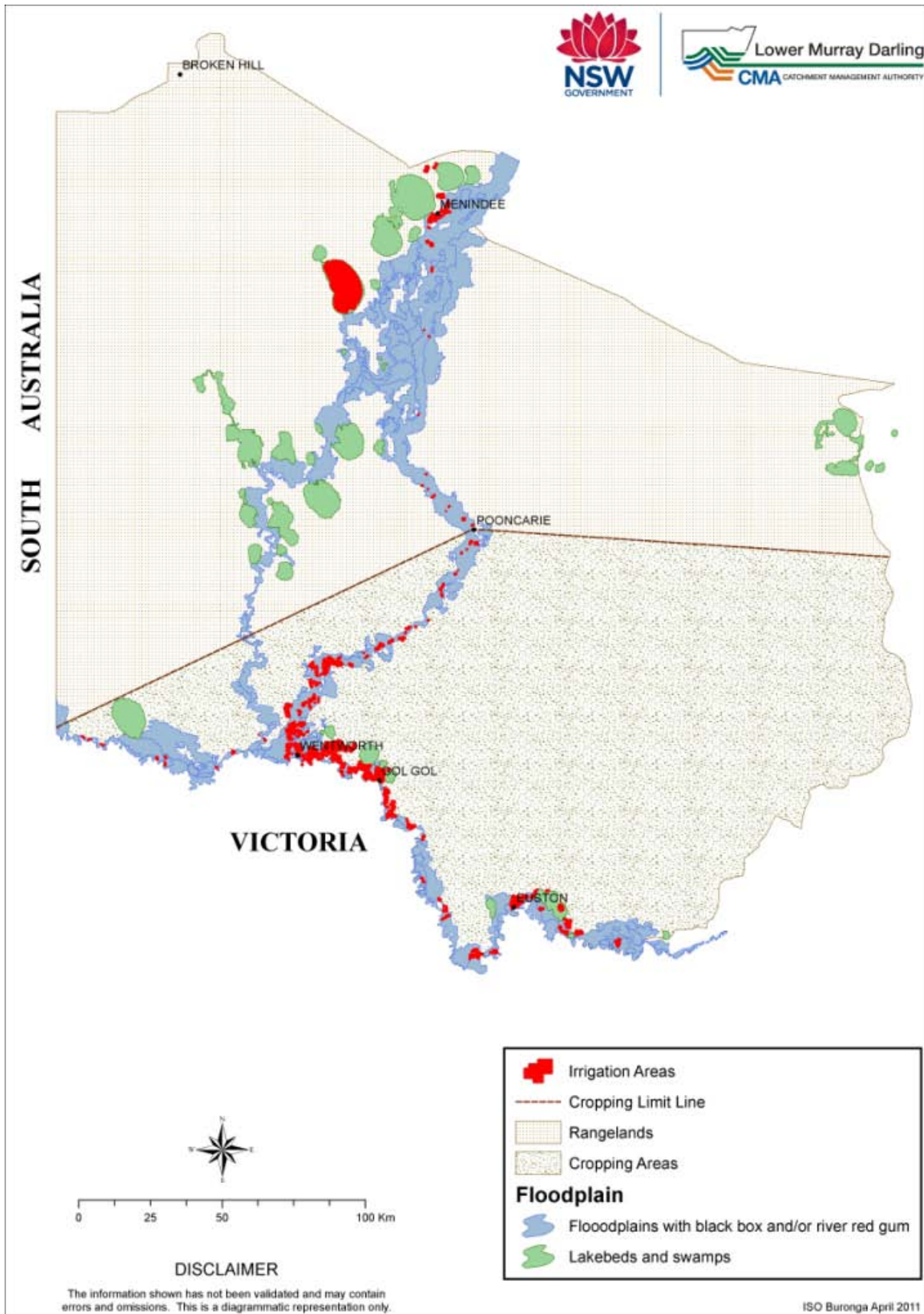
- To prevent the establishment and spread of emerging weed problems (Category A)
- Contain infestations with limited and moderate distribution (Category B and C)
- Manage widespread weed problems (Category D).

It is impractical to have one priority list of weeds across the entire Riverina region because of large variations in rainfall, topography, landuse and vegetation communities. During the stakeholder consultations, each catchment was split up into agreed subregions for the purpose of weed ranking

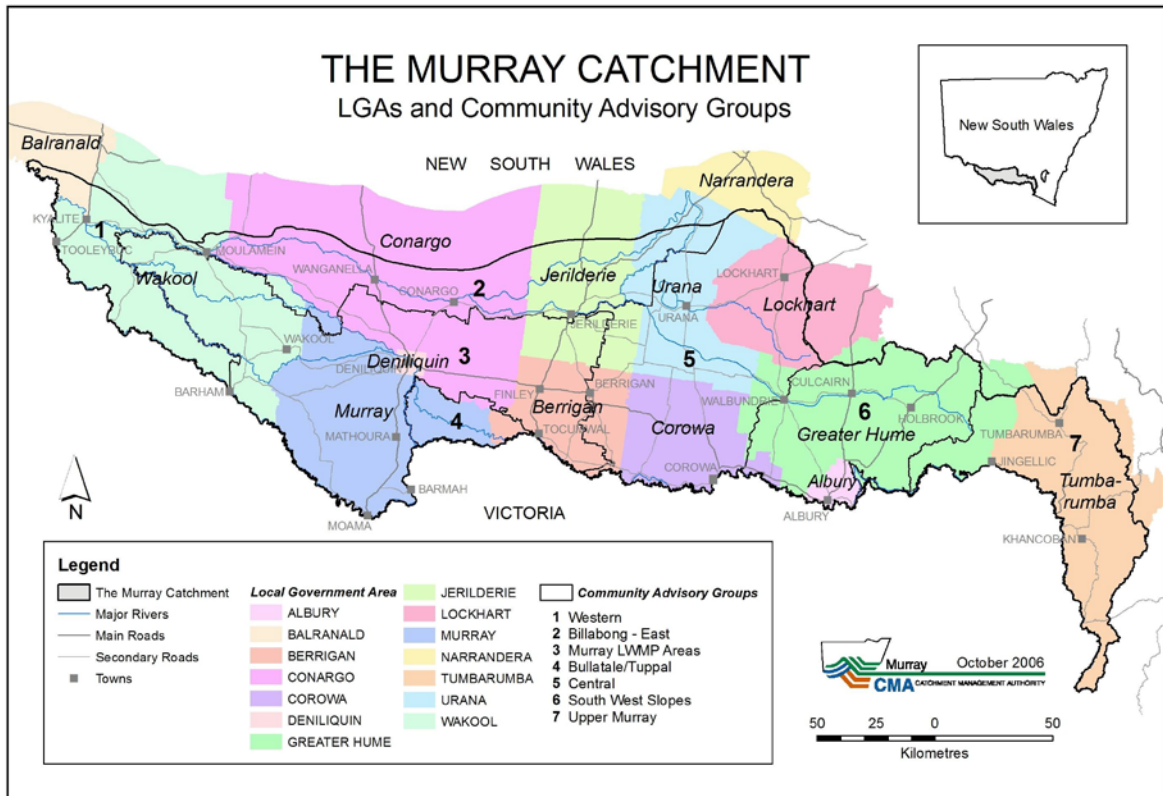
**Lachlan Catchment subregions:** the lower Lachlan, mid Lachlan and upper Lachlan.



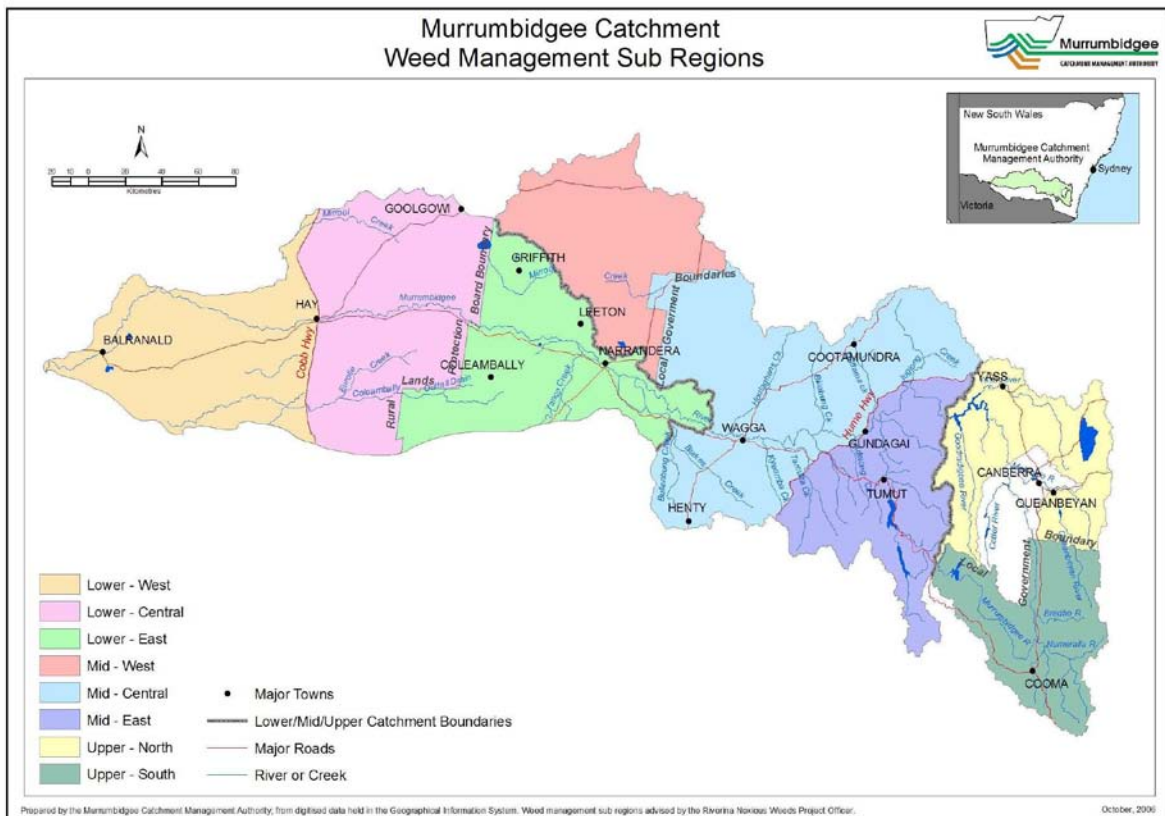
**Lower Murray Darling Catchment subregions: Riparian areas (Floodplain), Horticultural (Irrigation areas), Rangelands & Cropping.**



**Murray Catchment subregions:** Western; Billabong–East; Murray LWMP areas; Bullatale / Tuppal; Central; South West Slopes; and Upper Murray.



**Murrumbidgee Catchment subregions:** Lower west, Lower central, Lower east, Mid west, Mid central and Mid east.



**High Risk Species:** All Class 1 & 2 weeds and Category A & B weeds in a CMA subregion

<b>Class 1 &amp; 2 noxious weeds of the Riverina region as per Order 28 – 30/09/2011</b>	
Alligator weed	<i>Alternanthera philoxeroides</i>
Anchored water hyacinth	<i>Eichhornia azurea</i>
Black knapweed	<i>Centaurea nigra</i>
Black willow	<i>Salix nigra</i>
Boneseed	<i>Chrysanthemoides monilifera</i> subsp <i>monilifera</i>
Broomrapes	<i>Orobanche</i> spp except the native <i>O. Cernua</i> variety <i>australiana</i> and <i>O. Minor</i>
Cape broom	<i>Genista monspessulana</i> *
Chinese violet	<i>Asystasia gangetica</i> subspecies <i>micrantha</i>
Eurasian water milfoil	<i>Myriophyllum spicatum</i>
Gorse	<i>Ulex europaeus</i> #
Hawkweed	<i>Hieracium</i> species
Heteranthera/kidneyleaf mud plaitain	<i>Heteranthera reniformis</i>
Horsetail	<i>Equisetum</i> spp
Hydrocotyl/Water pennywort	<i>Hydrocotyle ranunculoides</i>
Hymenachne	<i>Hymenachne amplexicaulis</i> and hybrids
Karoo thorn	<i>Acacia karroo</i>
Kochia	<i>Bassia scoparia</i> except <i>B.scoparia</i> subsp <i>trichophylla</i>
Koster's curse/Clidemia	<i>Clidemia hirta</i>
Lagarosiphon	<i>Lagarosiphon major</i>
Mesquite	<i>Prosopis</i> spp
Mexican feather grass	<i>Nassella tenuissima</i>
Miconia	<i>Miconia</i> spp
Mikania	<i>Mikania micrantha</i>
Mimosa	<i>Mimosa pigra</i>
Parkinsonia	<i>Parkinsonia aculeata</i>
Parthenium weed	<i>Parthenium hysterophorus</i>
Pond apple	<i>Annona glabra</i>
Prickly acacia	<i>Acacia nilotica</i>
Rubbervine	<i>Cryptostegia grandiflora</i>
Salvinia	<i>Salvinia molesta</i>
Senegal tea plant	<i>Gymnocoronis spilanthoides</i>
Siam weed	<i>Chromolaena odorata</i>
Spotted knapweed	<i>Centaurea stoebe</i> subsp <i>micranthos</i>
Tropical soda apple	<i>Solanum viarum</i>
Water caltrop	<i>Trapa</i> spp
Water hyacinth	<i>Eichhornia crassipes</i>
Water lettuce	<i>Pistia stratiotes</i>
Water soldier	<i>Stratiotes aloides</i>
Witchweed	<i>Striga</i> spp excl native spp & <i>Striga parviflora</i>
Yellow burrhead	<i>Limnocharis flava</i>

# declared in Albury City, Corowa Shire, Greater Hume Shire, Gundagai Shire, Junee Shire, Tumbarumba Shire, Tumut Shire and Wagga Wagga City Councils only.

\* not declared in Albury City, Bland Shire, Greater Hume Shire, Gundagai Shire, Tumbarumba and Tumut Shire Councils.

Lachlan RWS – as adapted from LRWMP High Risk Species list.

Category A & B Weeds – please refer to the RWS to check status per sub region			
Alligator weed	<i>Alternanthera philoxeroides</i>	Blackberry	<i>Rubus fruticosus (agg.sp)</i>
Blue heliotrope	<i>Heliotropium amplexicaule</i>	Boneseed	<i>Chrysanthemoides monilifera</i>
Bridal creeper	<i>Asparagus asparagoides</i>	Cape Broom	<i>Genista monspessulana</i>
Chilean needle grass	<i>Nassella neesiana</i>	Coolatai grass	<i>Hyparrhenia hirta</i>
Fireweed	<i>Senecio madagascariensis</i>	Golden dodder	<i>Cuscuta campestris</i>
Gorse	<i>Ulex europaeus</i>	Lippia	<i>Phyla sp</i>
Mother of Millions	<i>Bryophyllum delagoense</i>	Parthenium weed	<i>Parthenium hysterophorus</i>
Prairie Ground cherry	<i>Physalis hederifolia, P. virginiana</i>	Sagittaria	<i>Sagittaria graminea</i>
Serrated tussock	<i>Nassella trichotoma</i>	St Johns Wort	<i>Hypericum perforatum</i>
Tamarix species	<i>Tamarix sp</i>	Tiger pear	<i>Opuntia aurantiaca</i>

### Lower Murray Darling RWS

Category A & B Weeds – please refer to the RWS to check status per sub region			
Alligator weed	<i>Alternanthera philoxeroides</i>	African Rue	<i>Peganum harmala</i>
Athel Pine	<i>Tamarix aphylla</i>	Bitou bush & boneseed	<i>Chrysanthemoides monilifera</i>
Branched broomrape	<i>Orobanche species</i>	Buffalo burr	<i>Solanum rostratum</i>
Camel thorn	<i>Alhagi pseudalhagi</i>	Columbus grass	<i>Sorghum x alnum</i>
Green Cestrum	<i>Cestrum parqui</i>	Hardhead thistle	<i>Rhaponticum repens</i>
Harrisia cactus	<i>Harrisia sp</i>	Hawkweed	<i>Hieracium sp</i>
Horsetail	<i>Equisetum species</i>	Jerusalem thorn	<i>Parkinsonia aculeata</i>
Karoo thorn	<i>Acacia karroo</i>	Knapweed black/spotted	<i>Centaurea sp</i>
Kochia	<i>Kochia scoparia</i>	Mesquite	<i>Prosopis sp</i>
Mexican feathergrass	<i>Nassella tenuissima</i>	Noogoora burr	<i>Xanthium sp</i>
Parthenium weed	<i>Parthenium hysterophorus</i>	Prairie Ground Cherry	<i>Physalis hederifolia, P. virginiana</i>
Prickly acacia	<i>Acacia nilotica</i>	Rhus tree	<i>Toxicodendron succedaneum</i>
Sagittaria	<i>Sagittaria graminea</i>	Silk forage sorghum	<i>Sorghum sp hybrid cv</i>
Silverleaf nightshade	<i>Solanum elaeagnifolium</i>	Tree of Heaven	<i>Ailanthus altissima</i>

### Murray RWS

Category A & B Weeds – please refer to the RWS to check status per sub region			
Alligator weed	<i>Alternanthera philoxeroides</i>	Blackberry	<i>Rubus fruticosus (agg.sp)</i>
Black willow	<i>Salix nigra</i>	Bridal creeper	<i>Asparagus asparagoides</i>
Camel thorn	<i>Alhagi pseudalhagi</i>	Cape tulips	<i>Homeria sp</i>
Chilean needle grass	<i>Nassella neesiana</i>	Coolatai grass	<i>Hyparrhenia hirta</i>
Golden dodder	<i>Cuscuta campestris</i>	Gorse	<i>Ulex europaeus</i>
Hardhead thistle	<i>Rhaponticum repens</i>	Hemlock	<i>Conium maculatum</i>
Johnson grass	<i>Sorghum halepense</i>	Nodding thistle	<i>Carduus nutans</i>
Onion weed	<i>Asphodelus fistulosus</i>	Pampas grass	<i>Cortaderia sp</i>
Prairie Ground Cherry	<i>Physalis hederifolia, P. virginiana</i>	Ragwort	<i>Senecio jacobaea</i>
Rhus tree	<i>Toxicodendron succedaneum</i>	Sagittaria	<i>Sagittaria graminea</i>
Scotch broom	<i>Cytisus scoparius</i>	Scotch/Illyrian thistle	<i>Onopordum sp</i>
Serrated tussock	<i>Nassella trichotoma</i>	Silverleaf nightshade	<i>Solanum elaeagnifolium</i>
Star thistle	<i>Centaurea calcitrapa</i>	St Johns wort	<i>Hypericum perforatum</i>
Tree of heaven	<i>Ailanthus altissima</i>		

## Murrumbidgee RWS

Category A & B Weeds – please refer to the RWS to check status per sub region			
Alligator weed	<i>Alternanthera philoxeroides</i>	Blackberry	<i>Rubus fruticosus (agg.sp)</i>
Black willow	<i>Salix nigra</i>	Blue heliotrope	<i>Heliotropium amplexicaule</i>
Bridal creeper	<i>Asparagus asparagoides</i>	Camel thorn	<i>Alhagi pseudalhagi</i>
Cape tulips	<i>Homeria sp</i>	Chilean needle grass	<i>Nassella neesiana</i>
Coolatai grass	<i>Hyparrhenia hirta</i>	Fireweed	<i>Senecio madagascariensis</i>
Golden dodder	<i>Cuscuta campestris</i>	Gorse	<i>Ulex europaeus</i>
Green Cestrum	<i>Cestrum parqui</i>	Hardhead thistle	<i>Rhaponticum repens</i>
Hemlock	<i>Conium maculatum</i>	Hoary cress	<i>Cardaria draba</i>
Longstyle feathergrass	<i>Pennisetum villosum</i>	Nodding thistle	<i>Carduus nutans</i>
Perennial Canada thistle	<i>Cirsium arvense</i>	Onion weed	<i>Asphodelus fistulosus</i>
Prairie Ground Cherry	<i>Physalis hederifolia, P. virginiana</i>	Ragwort	<i>Senecio jacobaea</i>
Rhus tree	<i>Toxicodendron succedaneum</i>	Sagittaria	<i>Sagittaria graminea</i>
Scotch broom	<i>Cytisus scoparius</i>	Scotch/Illyrian thistle	<i>Onopordum sp</i>
Serrated tussock	<i>Nassella trichotoma</i>	Silverleaf nightshade	<i>Solanum elaeagnifolium</i>
Spiny burrgrass	<i>Cenchrus incertus, C. longispinus</i>	Star thistle	<i>Centaurea calcitrapa</i>
St Johns wort	<i>Hypericum perforatum</i>		

**Management of high risk species** - refer to Rapid Response Plan WAP 2.2.1 for specific procedures to be undertaken upon finding a new incursion of a high risk species. Only those weeds already declared noxious are bound by legal obligations.

**New high risk species** – species can be added to the lists in one of the following ways:

- by declaration – new Class 1 and Class 2 weeds
- by prioritisation – if the weed isn't declared a Class 1 or 2 noxious weed it must be put through the prioritisation process. It must rank as a category A or B to be added to the list.

**Nominations** can be made to the Riverina Noxious Weeds Project Officer or individual weeds officers to be discussed by either Eastern Riverina Noxious Weeds Advisory Group & Western Riverina Noxious Weeds Advisory Group prior to ranking the species.

### Linkages

- New Incursion Plan – High Risk Species WAP 1.2.2
- Riverina Inspection Policy WAP 1.2.3
- Rapid Response Plan WAP 2.2.1
- Lower Murray Darling RWS 2nd Edition 2006
- Prioritisation Process – available in the appendices of all RWS
- Lachlan Regional Weed Management Plan (LRWMP) High Risk Species list
- Notifiable Weed Reporting form – available from I&I NSW Extranet  
<http://extranet.dpi.nsw.gov.au/weeds/permit-report/report/notifiable-reports>
- Invasive Species Plan
- Lachlan RWS 2009
- Murray RWS 2008
- Murrumbidgee RWS 2007

Note: All RWS and WAP documents can be downloaded at [www.riverinaweeds.org.au/documents](http://www.riverinaweeds.org.au/documents)